

SURVEY CONTROL SHEET



PROJECT REFERENCE NO.
18314.1075011

SHEET NO.
RW02C-1

Location and Surveys

TGS ENGINEERS
201 WEST MARION STREET
SUITE 200
SHELBY, NC 28150
PH (704) 476-0003
CORP. LICENSE NO.: C-0275

PROJECT SURVEYOR

Signed by:
Matthew Cornwell
EB036F11473E475

9/23/2025

DOCUMENT NOT CONSIDERED FINAL
UNLESS ALL SIGNATURES COMPLETED

I, Matthew T. Cornwell, PLS, certify that the Project Control was performed under my supervision from an actual GPS survey made under my supervision and the following information was used to perform the survey:

Class of survey: **AA**
Type of GPS field procedure: RTN
Dates of survey: March 2025
Datum/Epoch: NAD83/2011
Published/Fixed-control use: N/A
Localized around: SEE NOTES
Nothing: SEE NOTES
Easting: SEE NOTES
Combined grid factor: SEE NOTES
Geoid model: GEOID18
Units: US SURVEY FEET

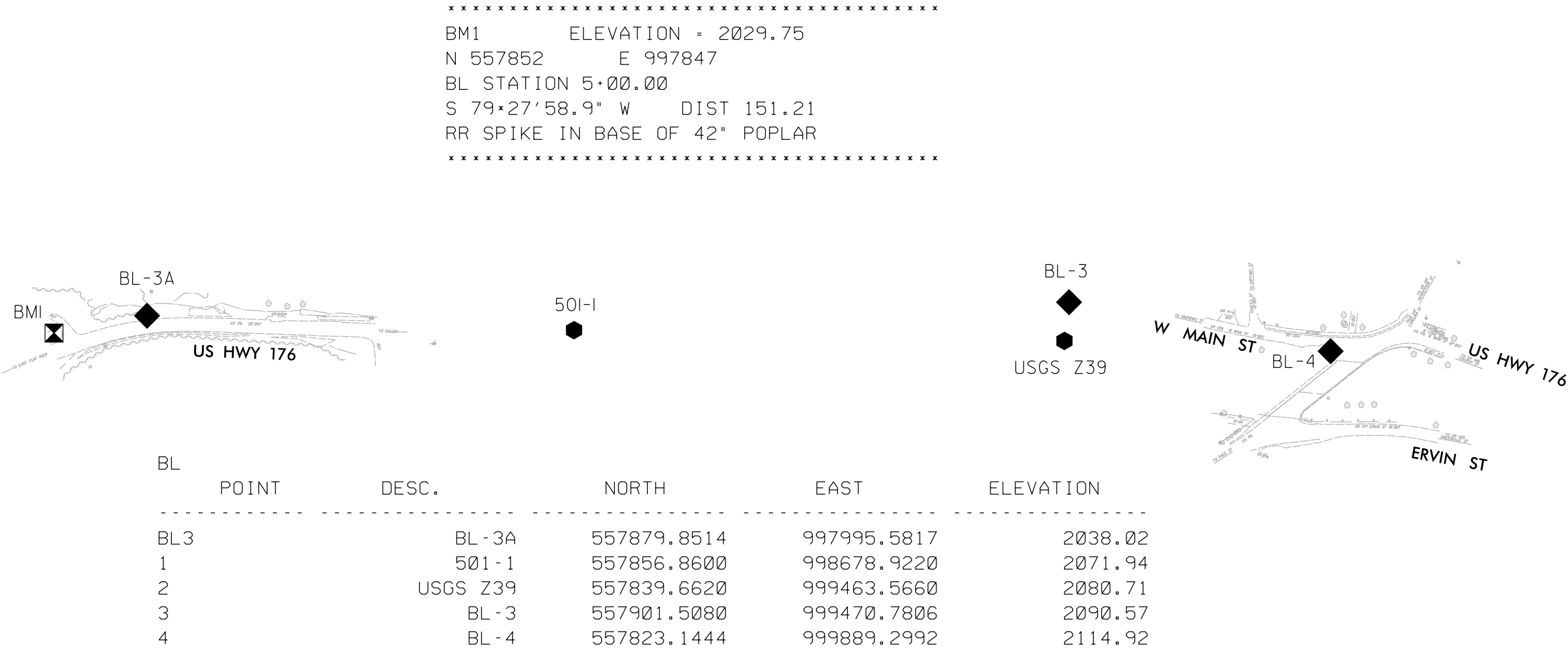
I also certify that the Baseline Control for this project was completed under my direct and responsible charge from an actual survey made under my supervision; that all horizontal closures had a minimum ratio of precision of 1:20,000 (Class AA) and Vertical accuracy to Class A. Field work was performed March 2025, and all coordinates are based on NAD 83/2011 and all elevations are based on NAVD 88; that this survey was performed to meet the requirements of 21NCAC 58.1600 as applicable.

This 9/23/2025

Signed by:
Matthew Cornwell
EB036F11473E475
Professional Land Surveyor L-4775

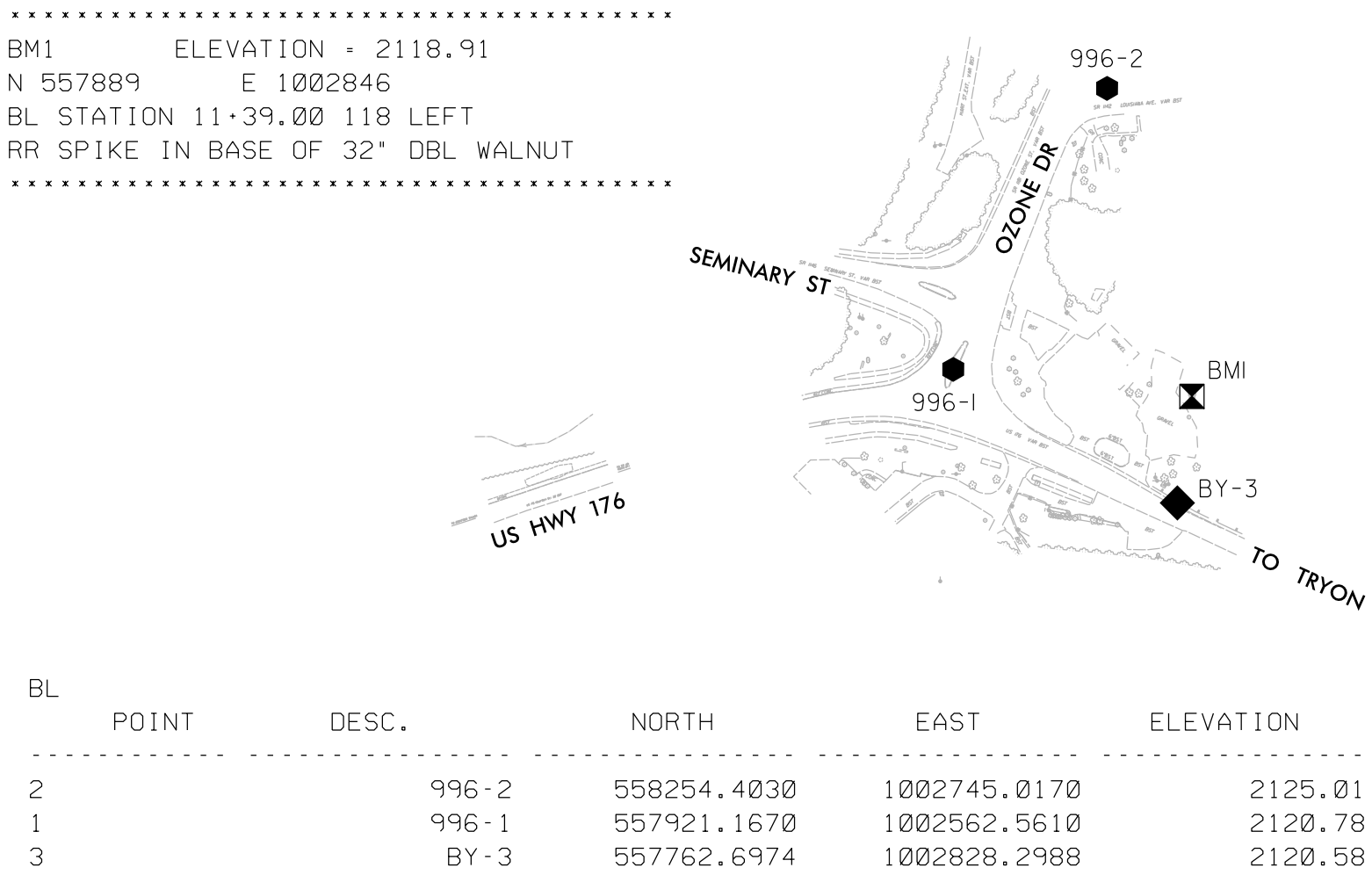
SITE LOCALIZATION INFORMATION FOR SITE 501 AND SITE 685:

LOCALIZED ABOUT: 501-1
N: 557856.860
E: 998678.922
EL: 2071.94
CGF: 0.99977841



SITE LOCALIZATION INFORMATION FOR SITE 508 AND SITE 619:

LOCALIZED ABOUT: 996-1
N: 557921.167
E: 1002562.561
EL: 2120.78
CGF: 0.99977608



NOTES:

- PROJECT CONTROL WAS ESTABLISHED USING GNSS, THE GLOBAL NAVIGATION SATELLITE SYSTEM.
- THE SURVEY CONTROL DATA FOR THIS PROJECT HAS BEEN COMPILED FROM VARIOUS SOURCES. IF FURTHER INFORMATION REGARDING PROJECT CONTROL IS NEEDED, PLEASE CONTACT THE LOCATION AND SURVEYS UNIT.